

**TWENTY FIRST
CENTURY EXPLORATION
AT THE TROY MINE,
NORTHWEST MONTANA**

British Columbia

Idaho

Montana

Canada



Troy Mine

Troy

Libby

Rock Creek Project

Lake Pend Oreille

Noxon

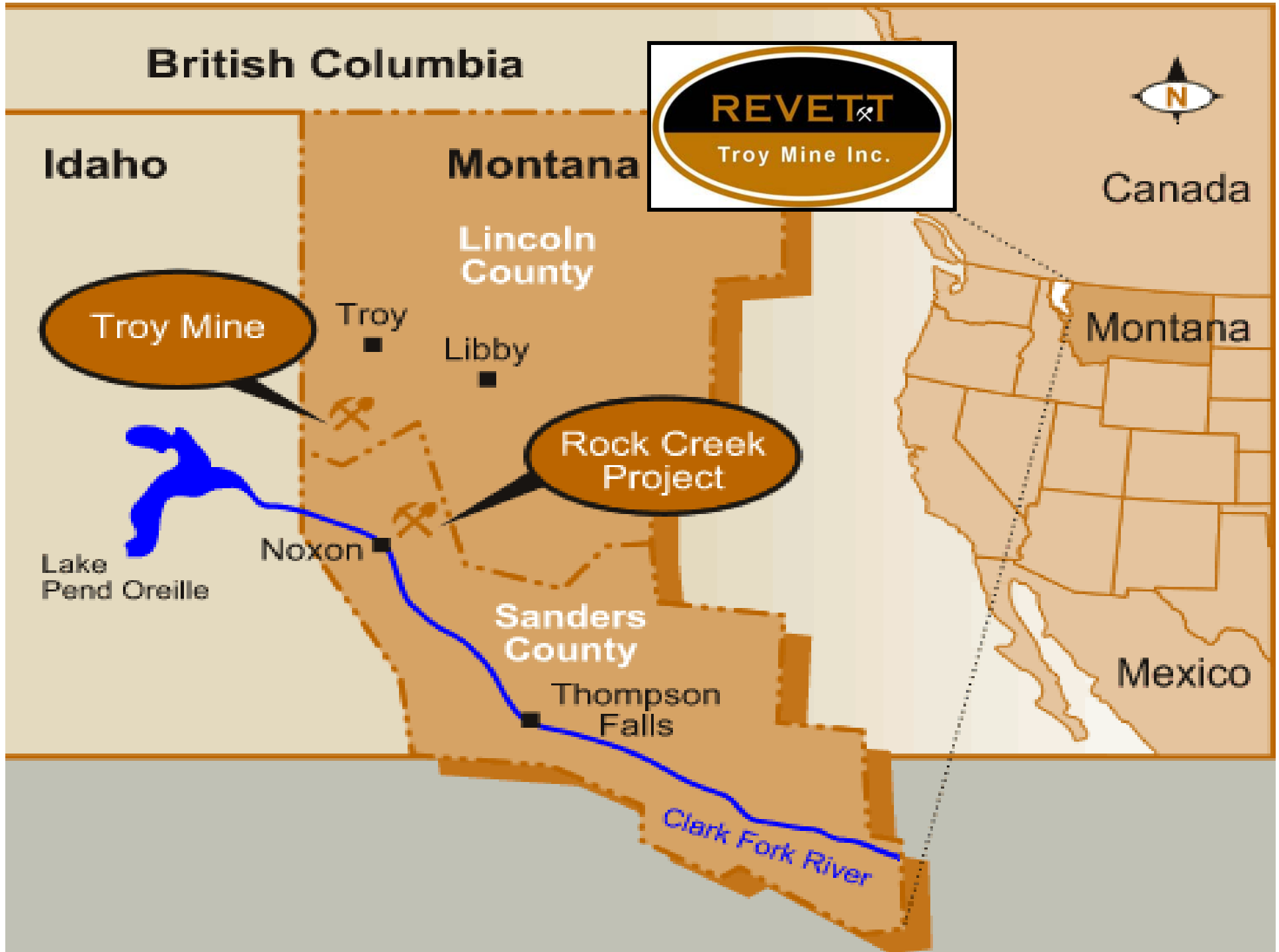
Sanders County

Thompson Falls

Montana

Mexico

Clark Fork River





Tailing Facility – Beach Sand



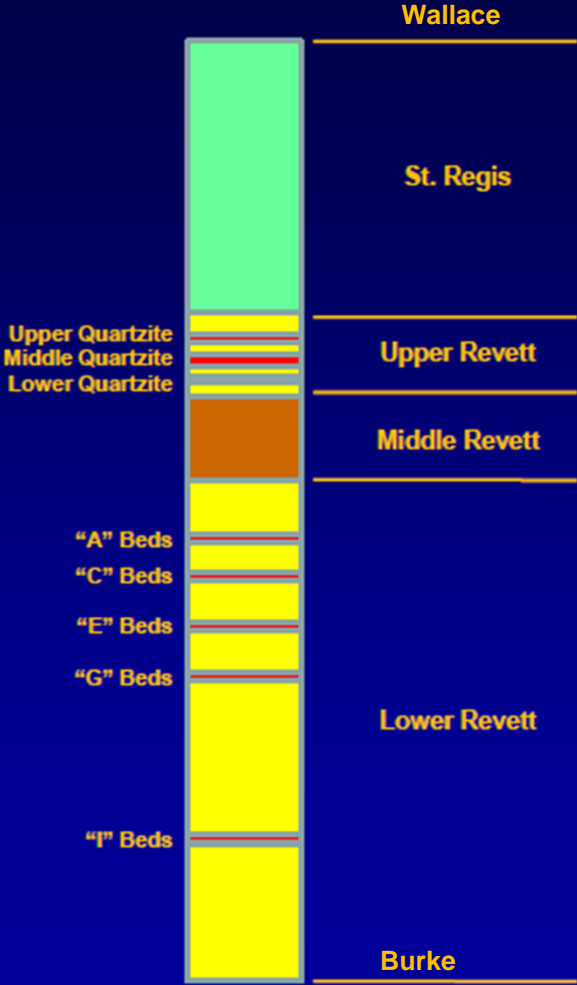
TROY MINE HISTORY

- 1940's EARLIEST CLAIMS ON MT. VERNON, DROPPED
- 1958 E.B.WILLIAMS, STAKED 3 CLAIMS @ NORTH END
- 1963 BEAR CREEK MINING CO. (KENNECOTT) BEGAN PROSPECTING IN THE AREA
- 1963-1964 C.R. WEARE, STAKED CLAIMS ON SOUTH END,
• THE SLIDE MINE
- 1964-1965 E.B.WILLIAMS, STAKED 52 CLAIMS @ NORTH END
- 1964-1965 BEAR CREEK MINING CO. (KENNECOTT) ACQUIRED WILLIAMS & WEARE CLAIMS AND STAKED CLAIMS.
- 1965-1971 DRILLING AND UNDERGROUND DEVELOPMENT
- 1973 KENNECOTT JOINT VENTURE WITH ASARCO
- 1979 CONSTRUCTION BEGAN (~\$90 MILLION)
- 1981 FIRST PRODUCTION
- 1993 MINE SHUT DOWN DUE TO LOW METAL PRICES
- 1999 REVETT MINERALS INC. ACQUIRED TROY MINE AND ROCK CREEK DEPOSIT
- 2004 21st CENTURY EXPLORATION DRILLING & RENEWED PRODUCTION BEGAN

GENERAL GEOLOGY

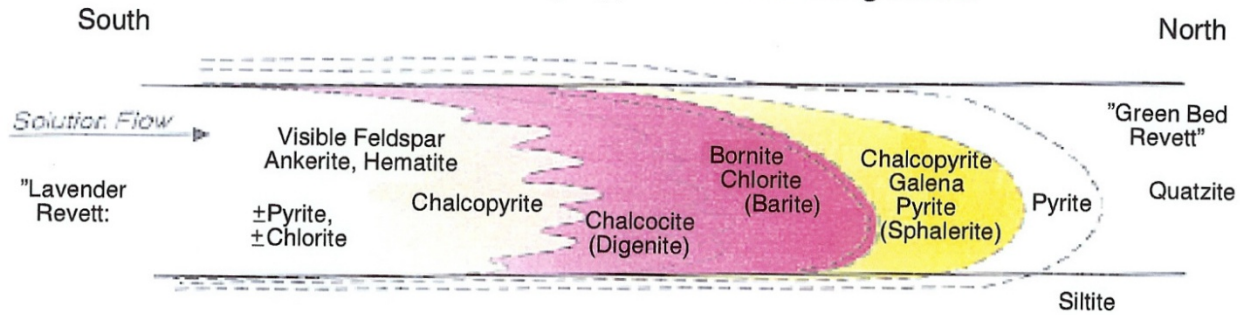
- Revett Formation
- Ravalli Group
- Middle Proterozoic Belt Supergroup

Revett Formation - Geologic Column & Mineralized Beds

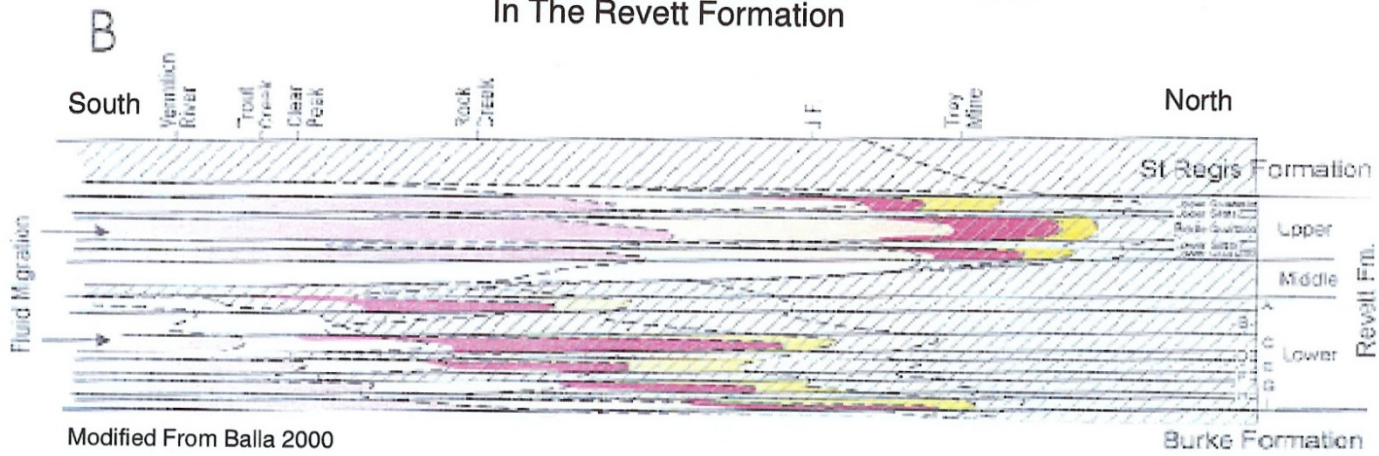


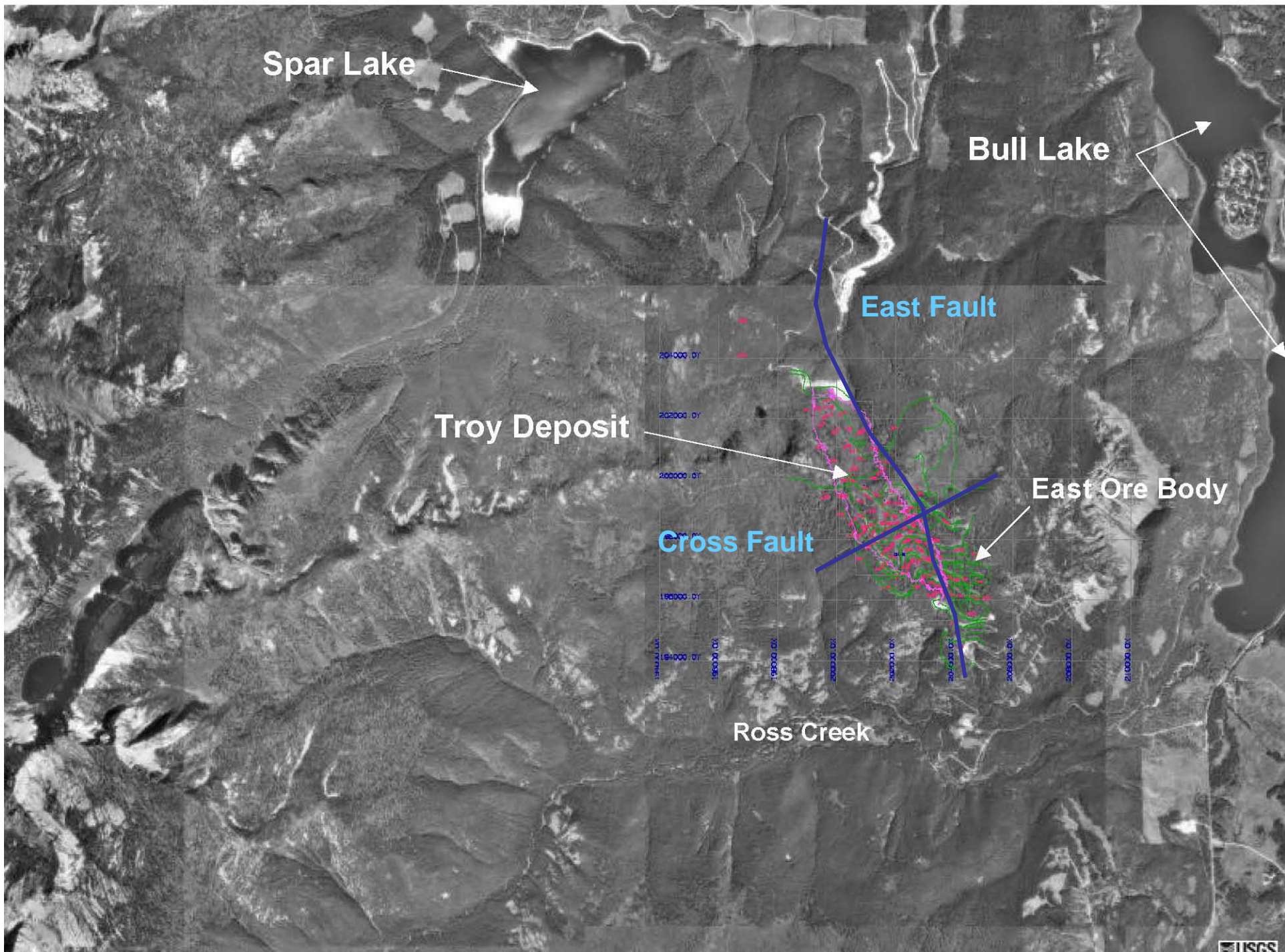
A

Generalized Troy-Type Mineral Zoning Model



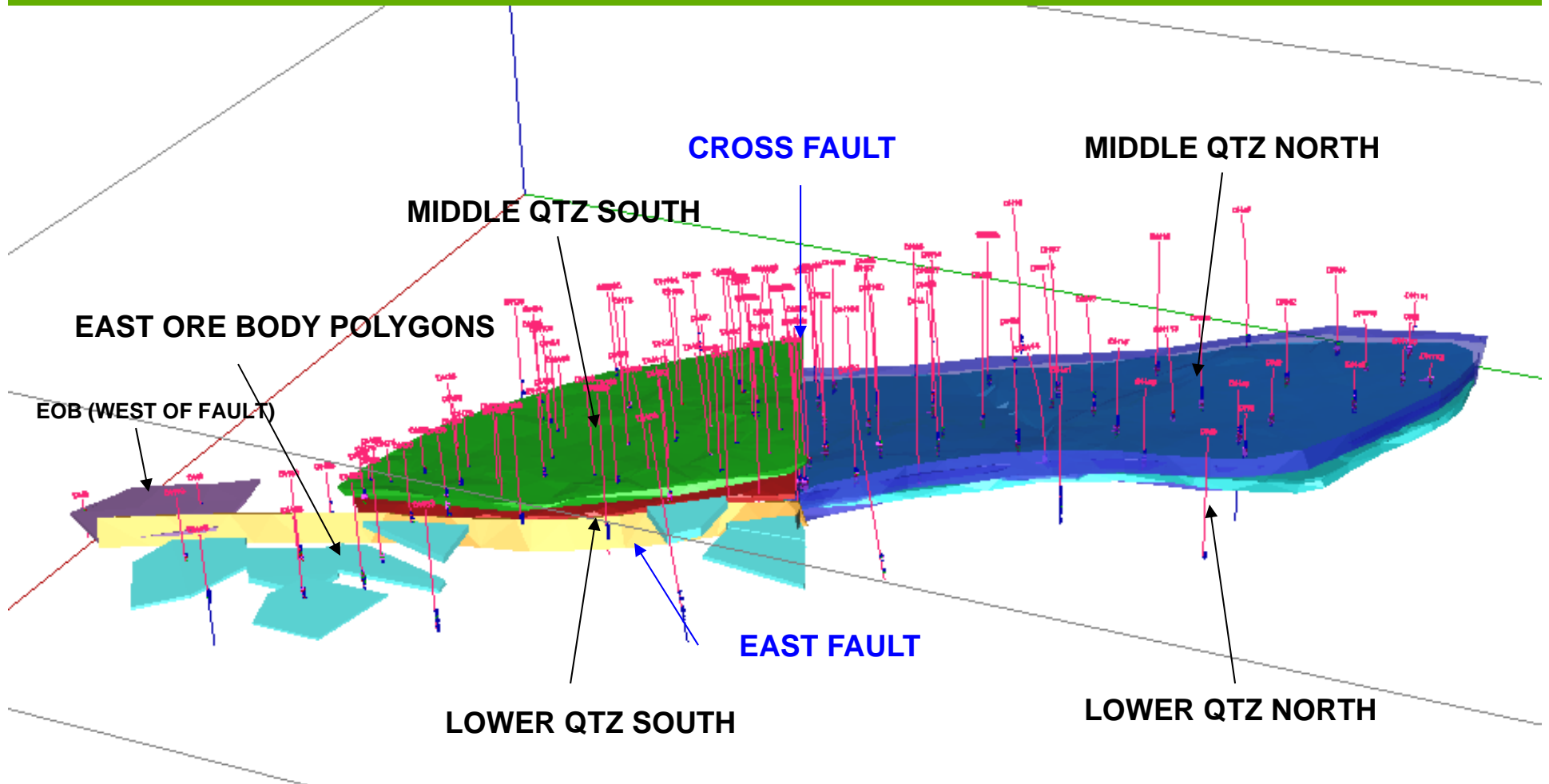
Regional Troy-Type Mineral Zoning Characteristics In The Revett Formation



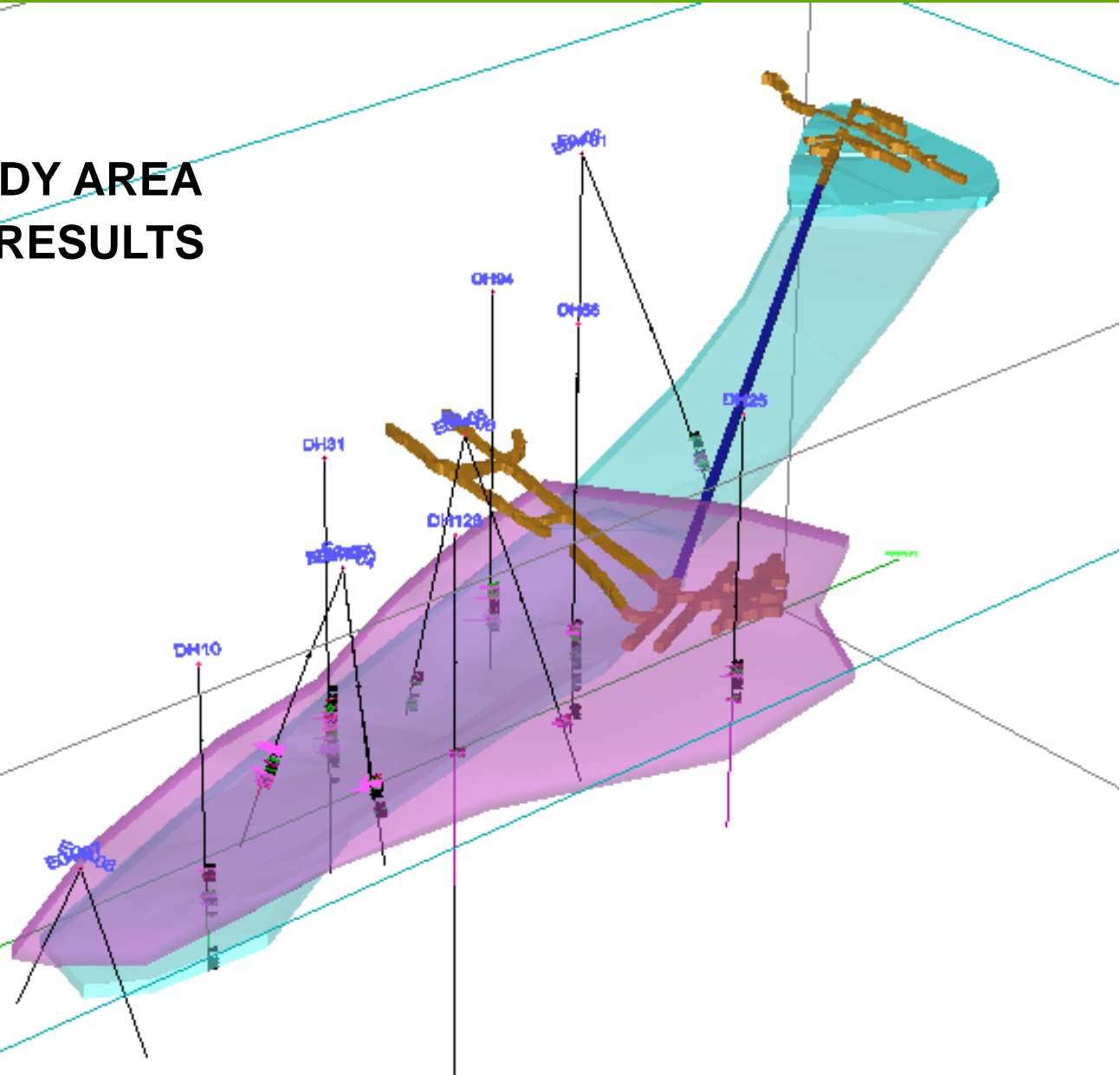


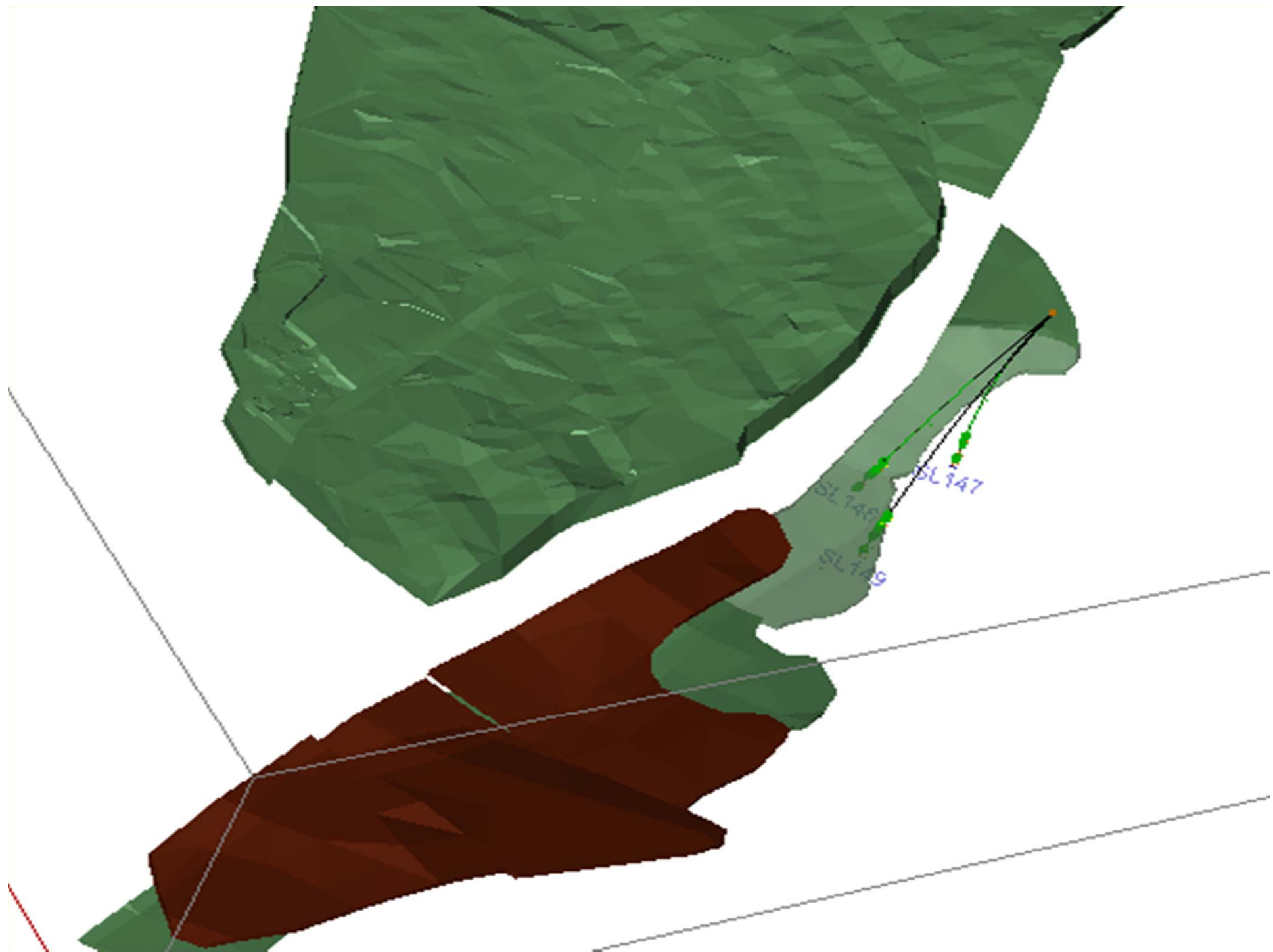
2004/2005 EXPLORATION

Previous Orebody Model



EAST ORE BODY AREA DRILL PLAN - RESULTS

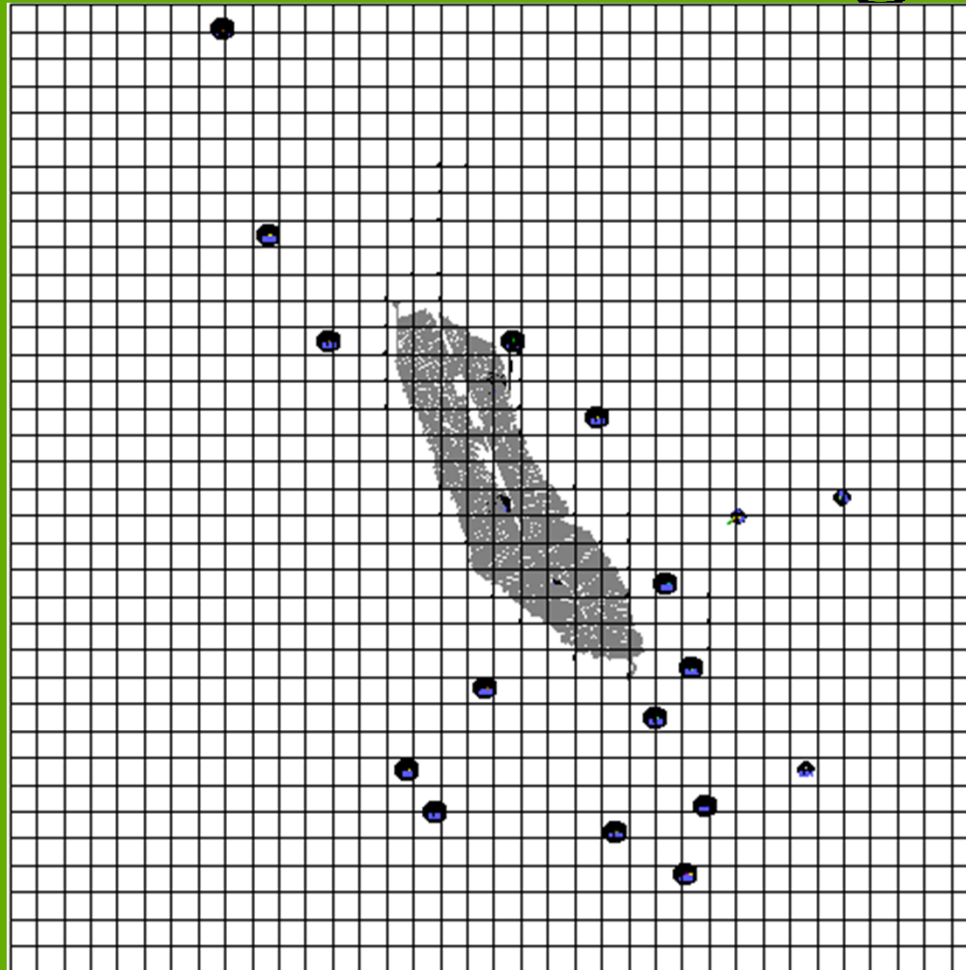




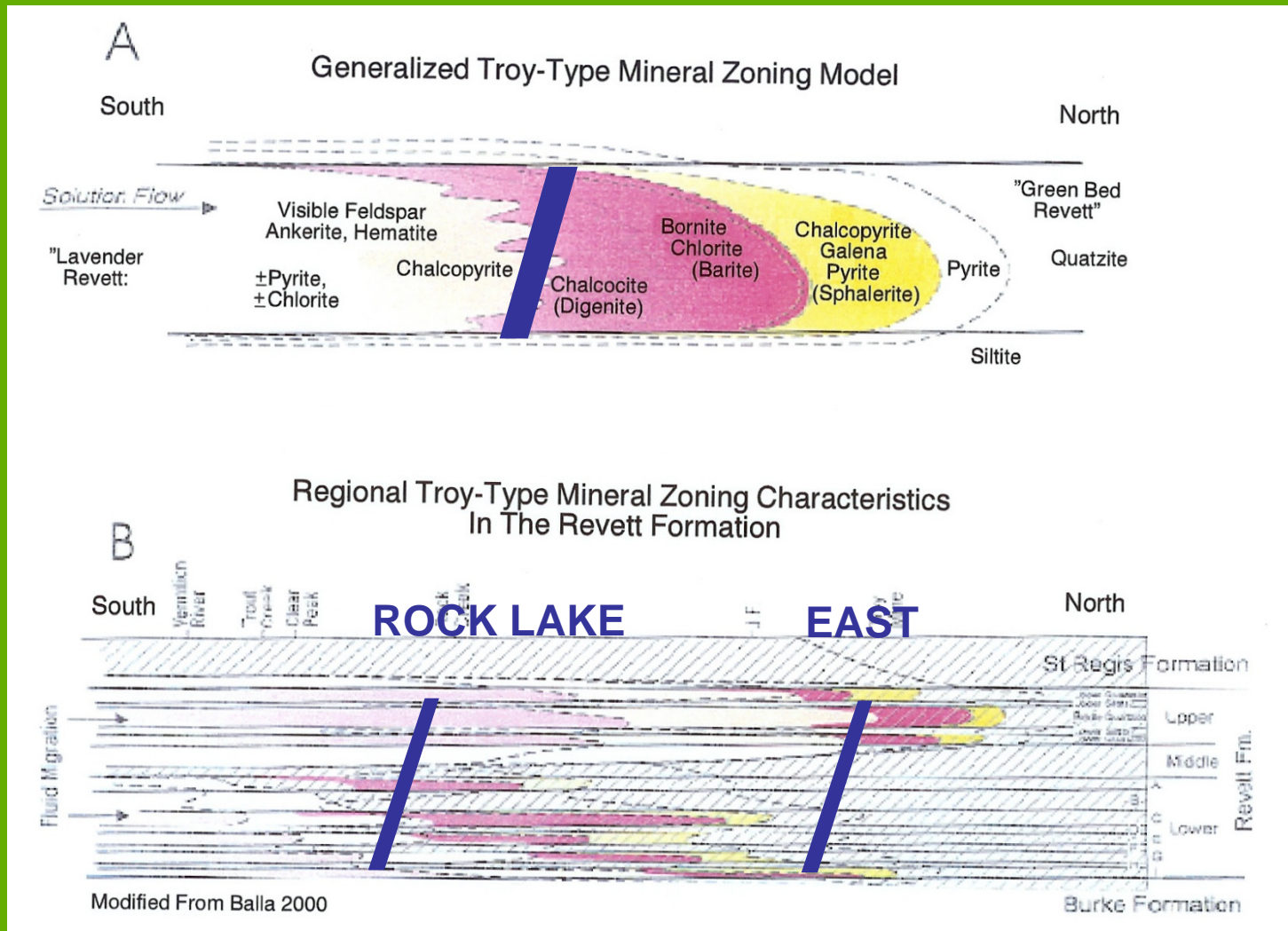
2006 & 2007 EXPLORATION

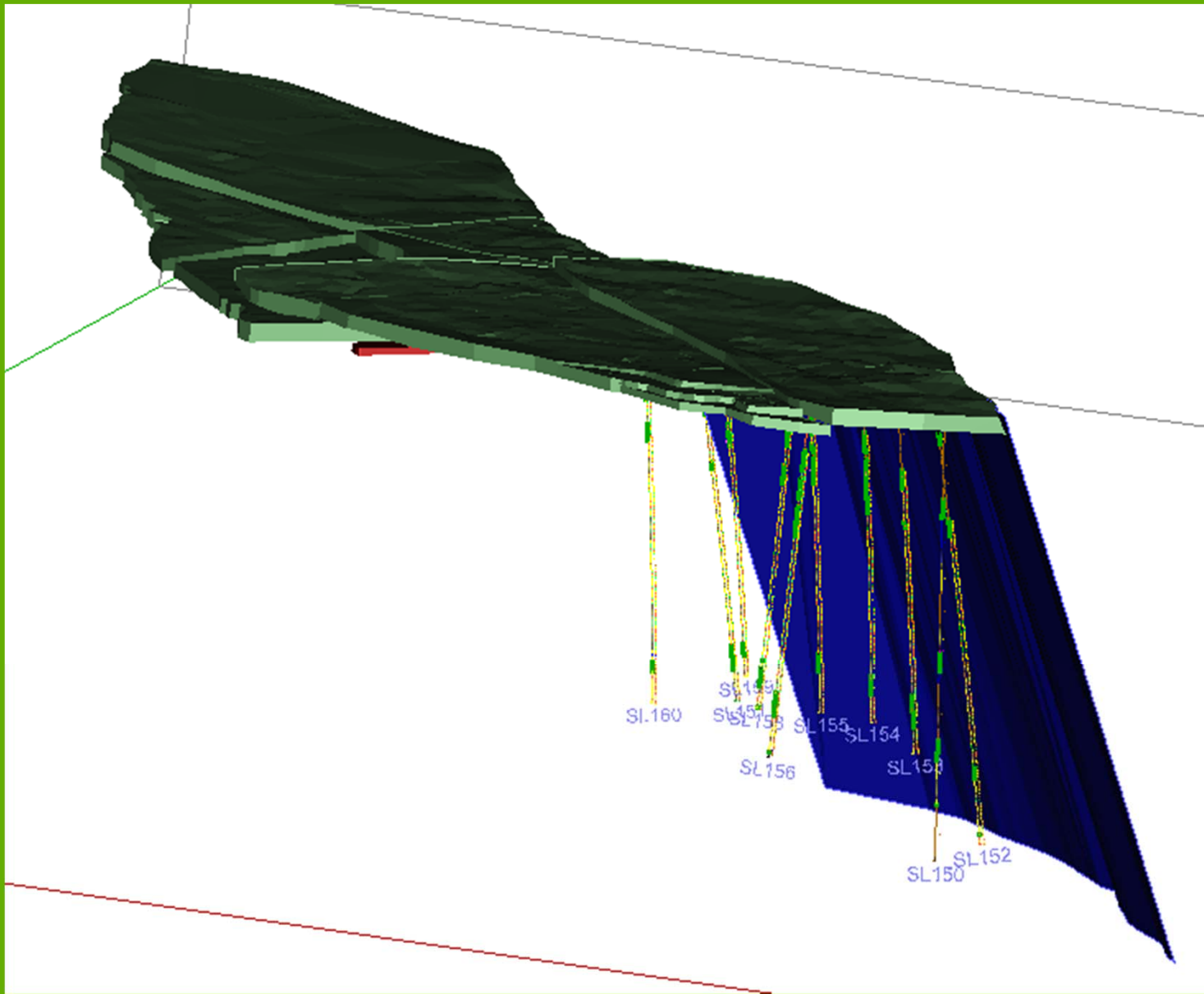
Lower Revett Exploration

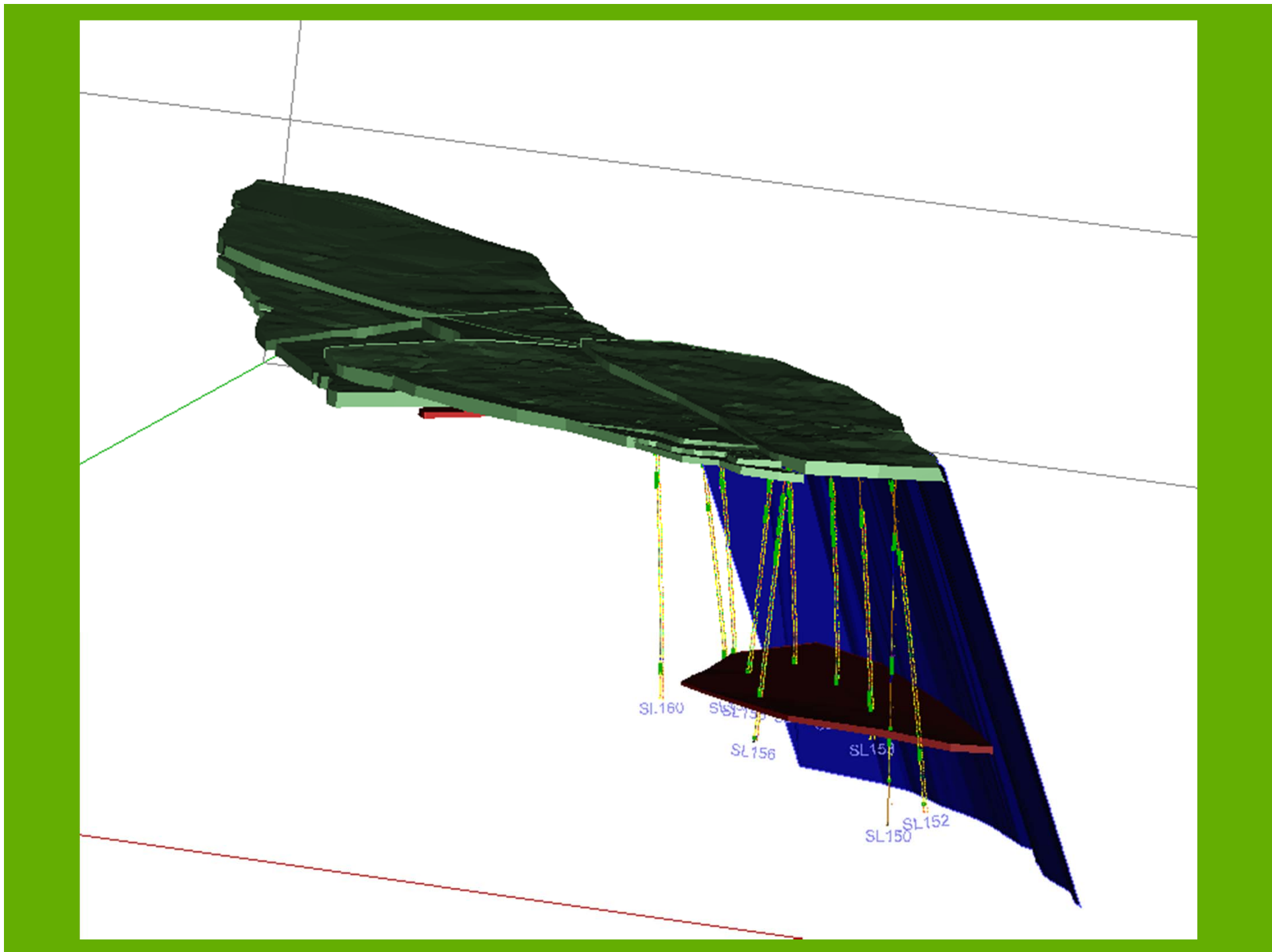
Previous Drilling

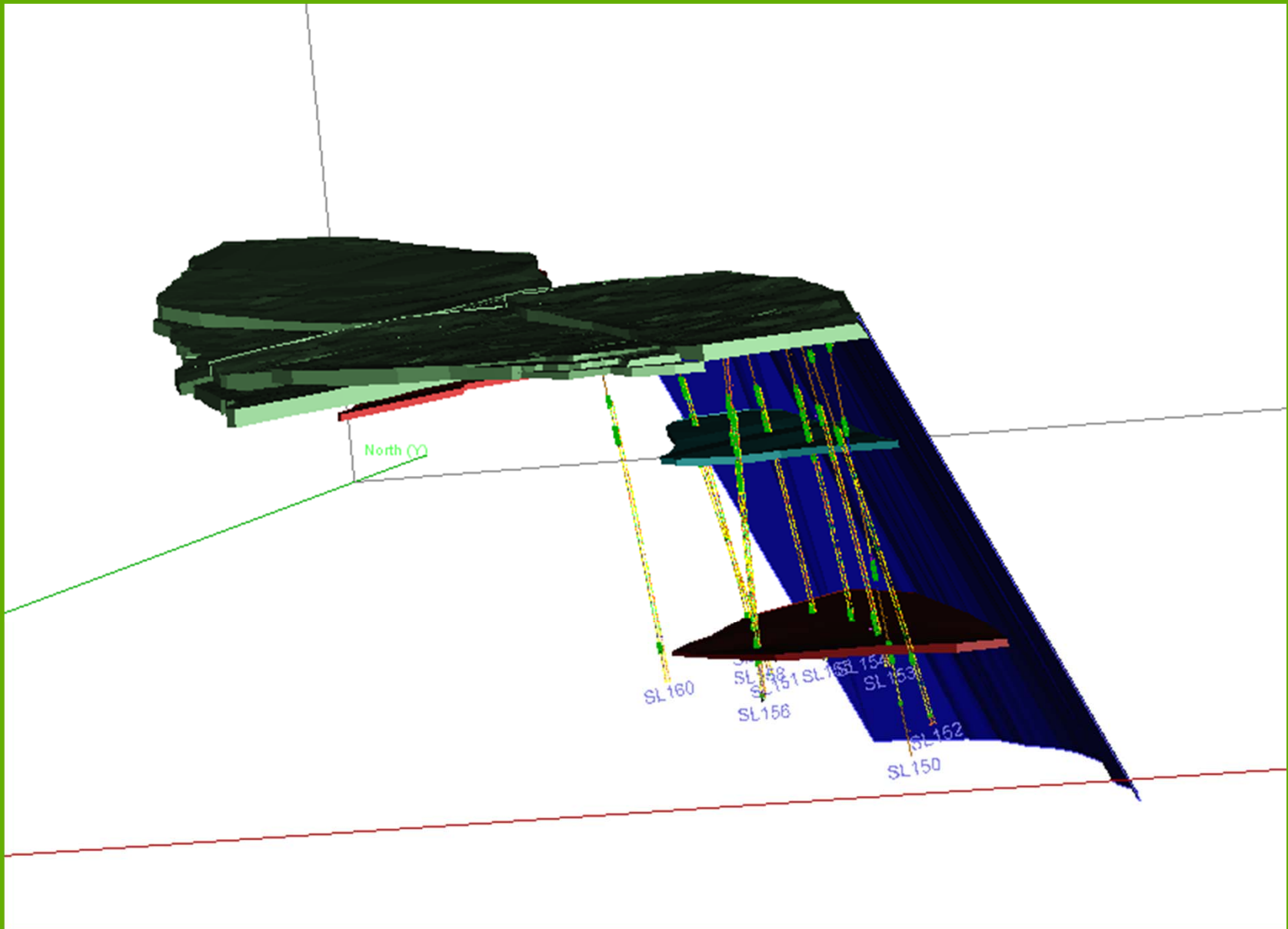


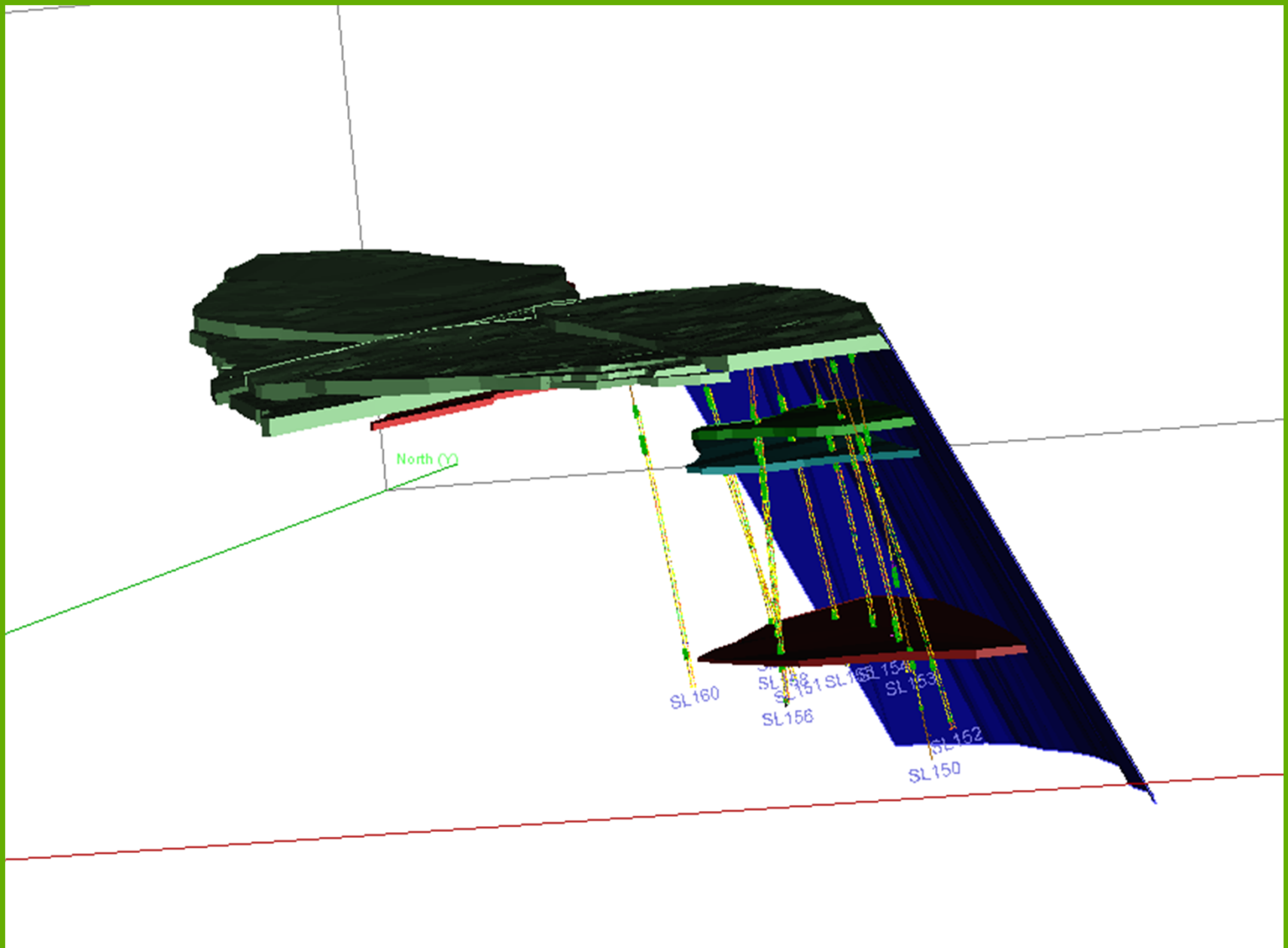
EAST FAULT?











New Lower Revett Quartzite Resources

	<u>TONS</u>	<u>opt Ag</u>	<u>ozs Ag</u>	<u>% Cu</u>	<u>lbs Cu</u>
A BED	816,674	0.90	734,859	0.27	4,461,923
C BED	1,316,419	1.56	2,056,732	0.56	14,620,371
<u>I BED</u>	<u>4,015,547</u>	<u>1.02</u>	<u>4,090,754</u>	<u>0.27</u>	<u>21,814,506</u>

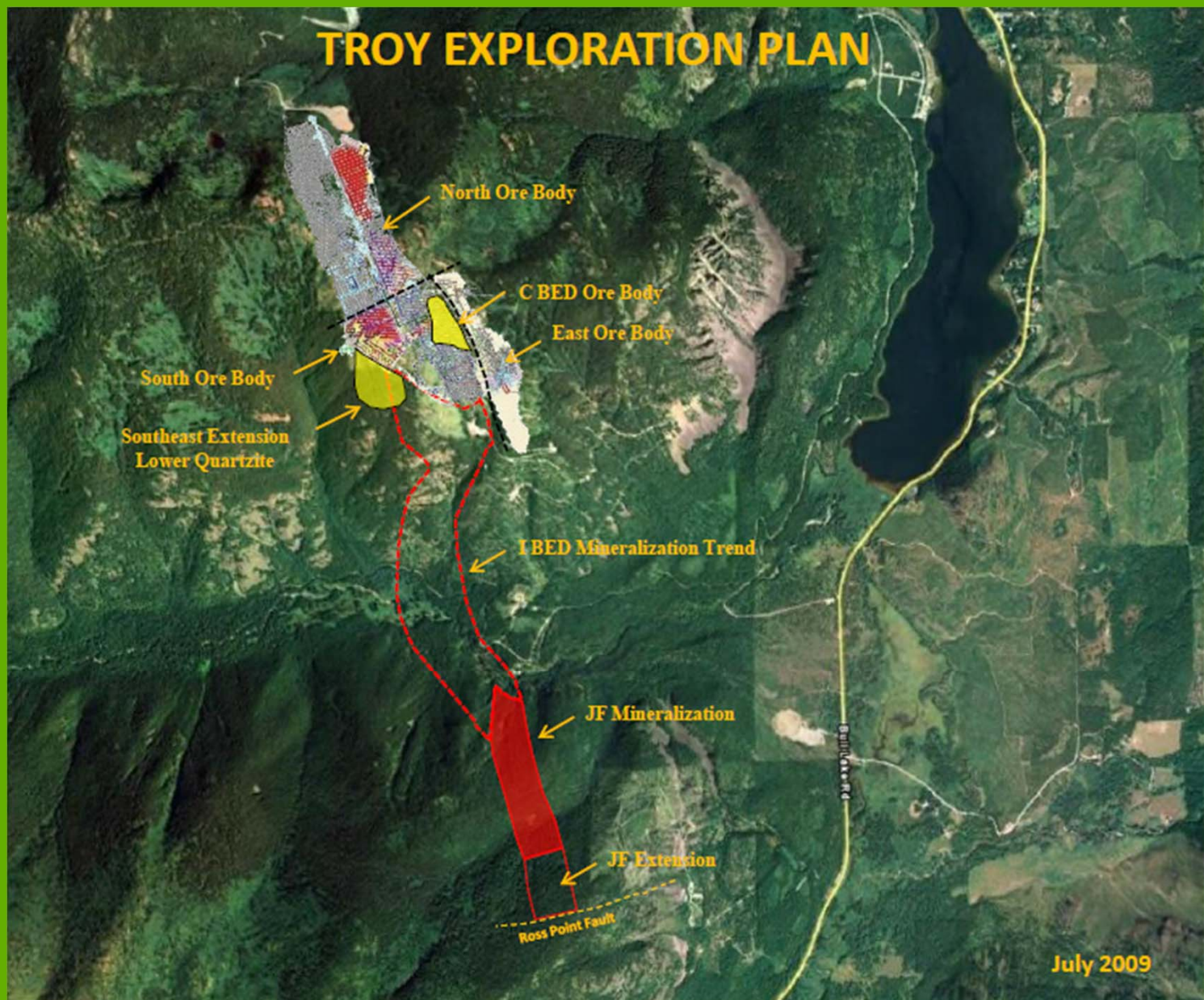
2008 to & 2012 EXPLORATION

Company Core Drill

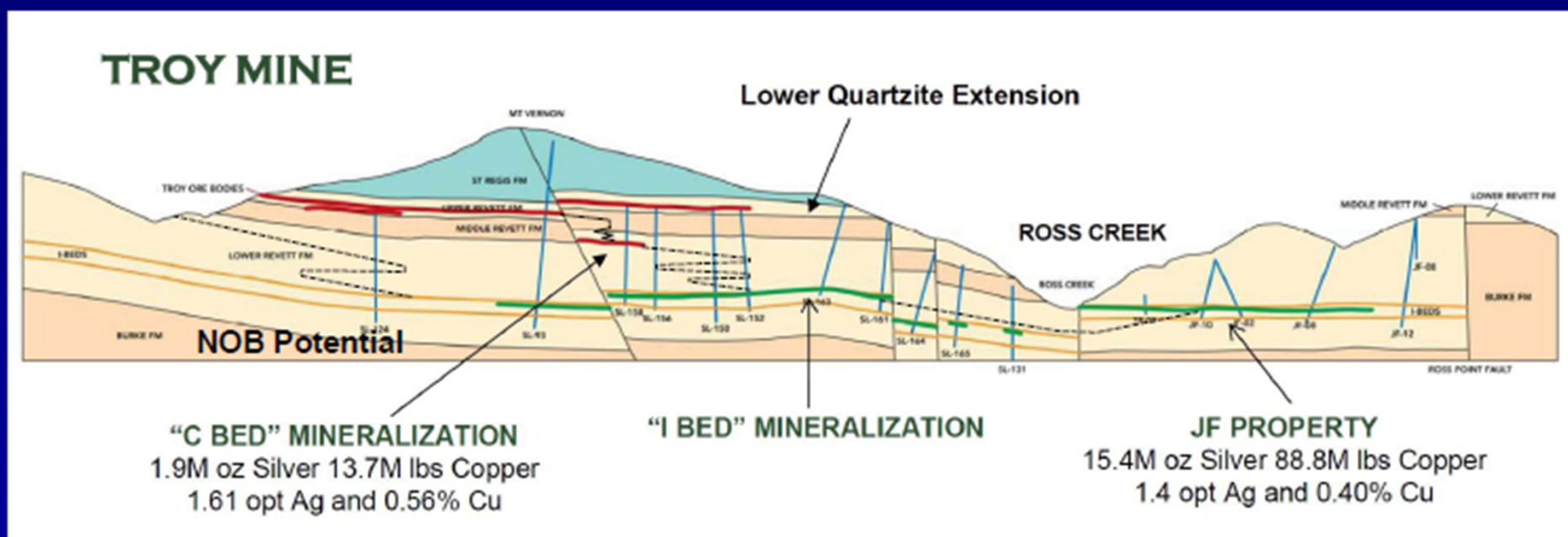
**Continued
Lower Revett Exploration**

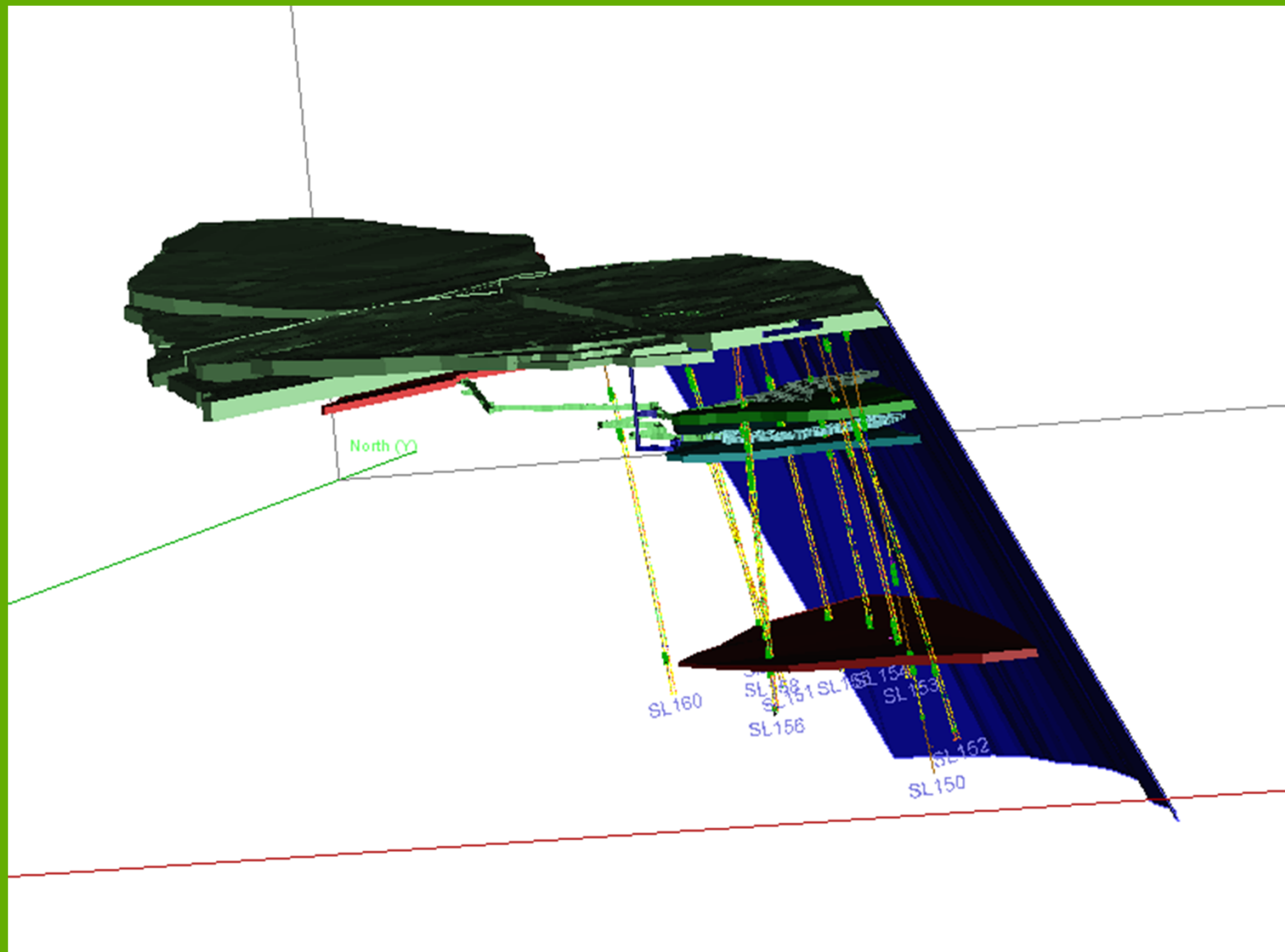
And Development

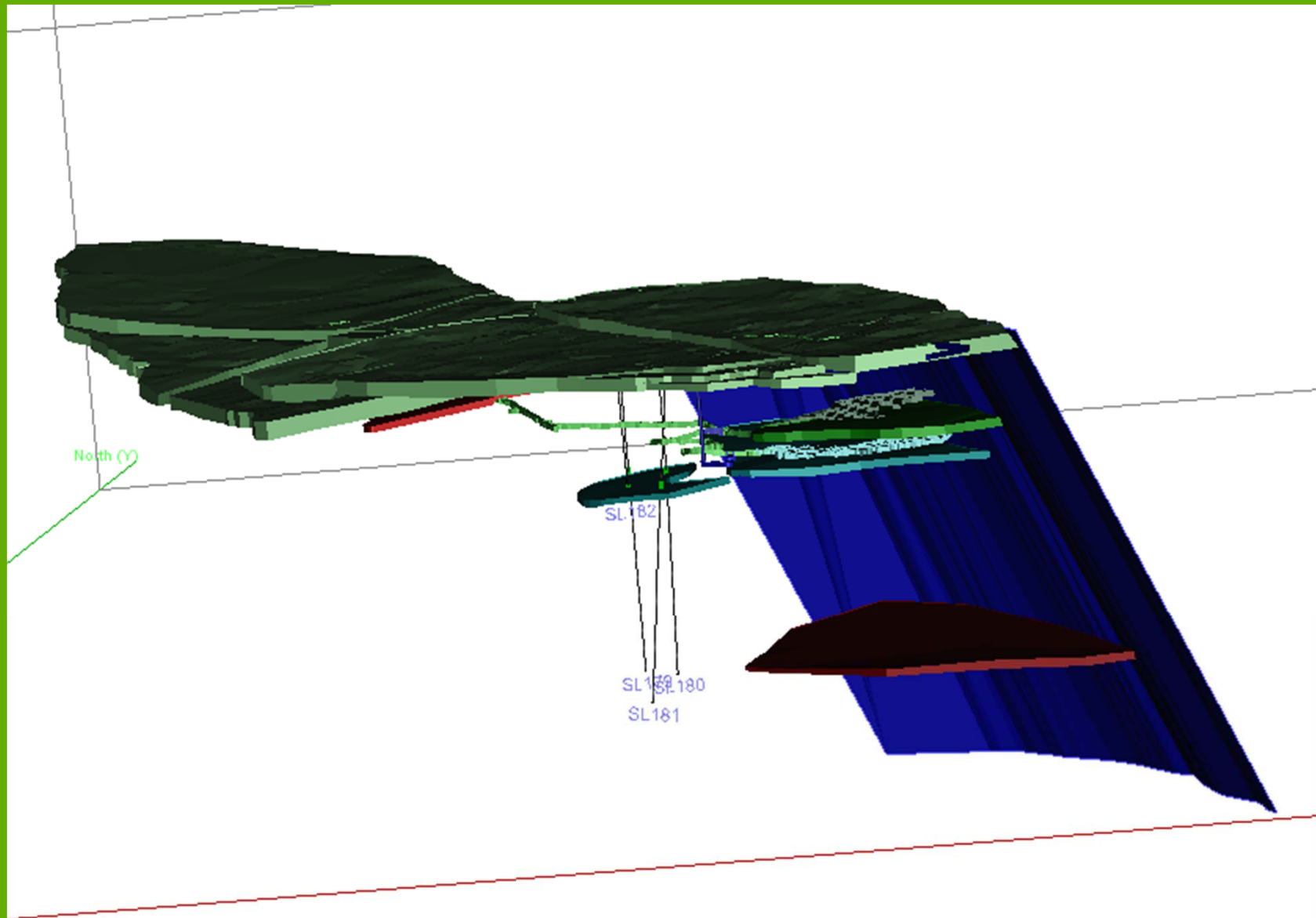
TROY EXPLORATION PLAN



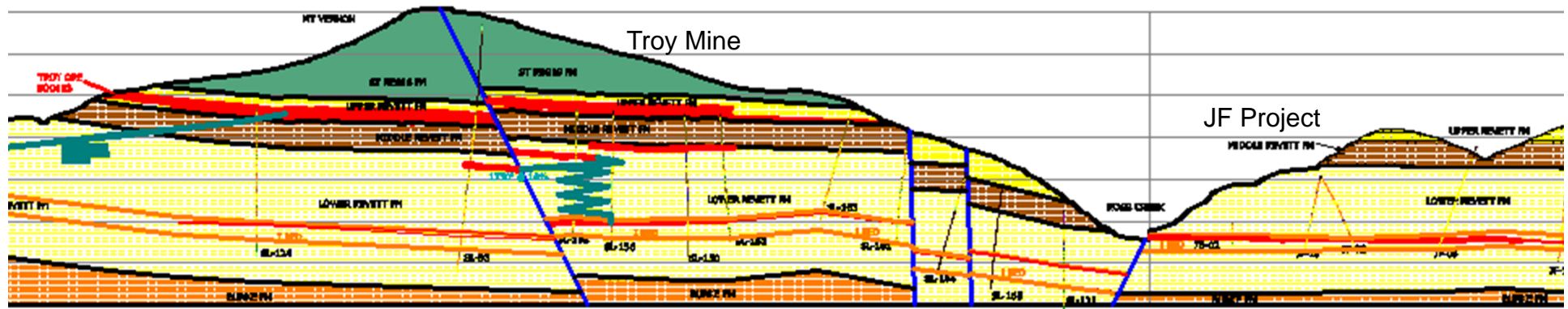
- JF Property – Historic inferred Resource**

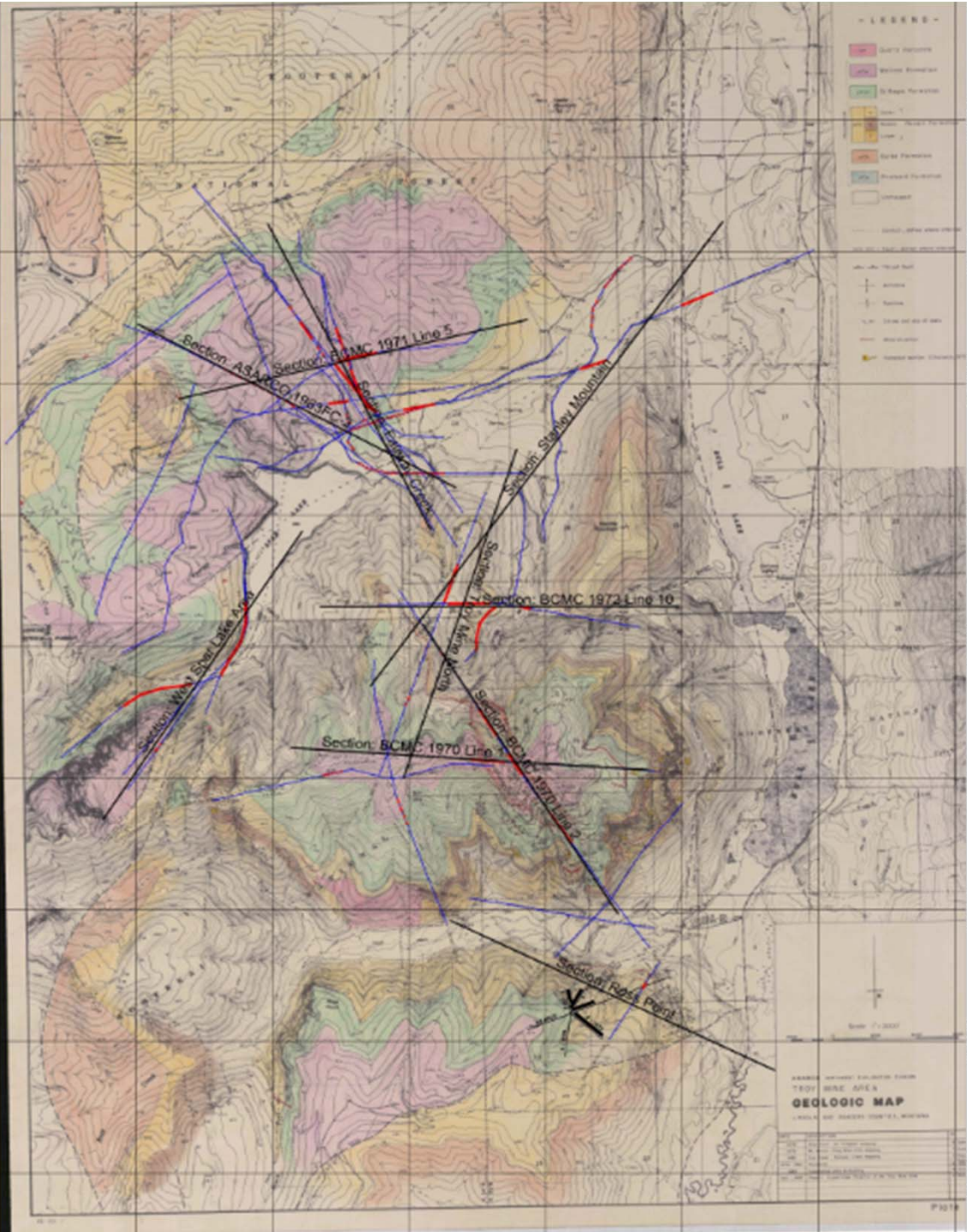






Mt. Vernon

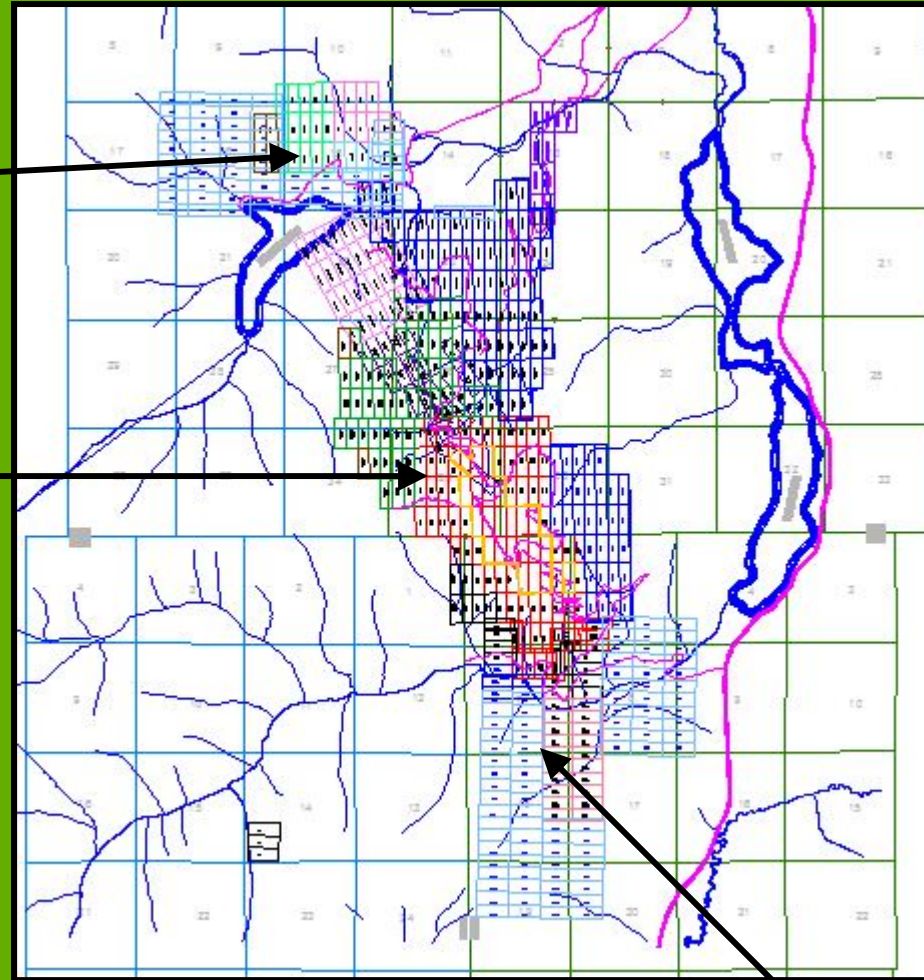




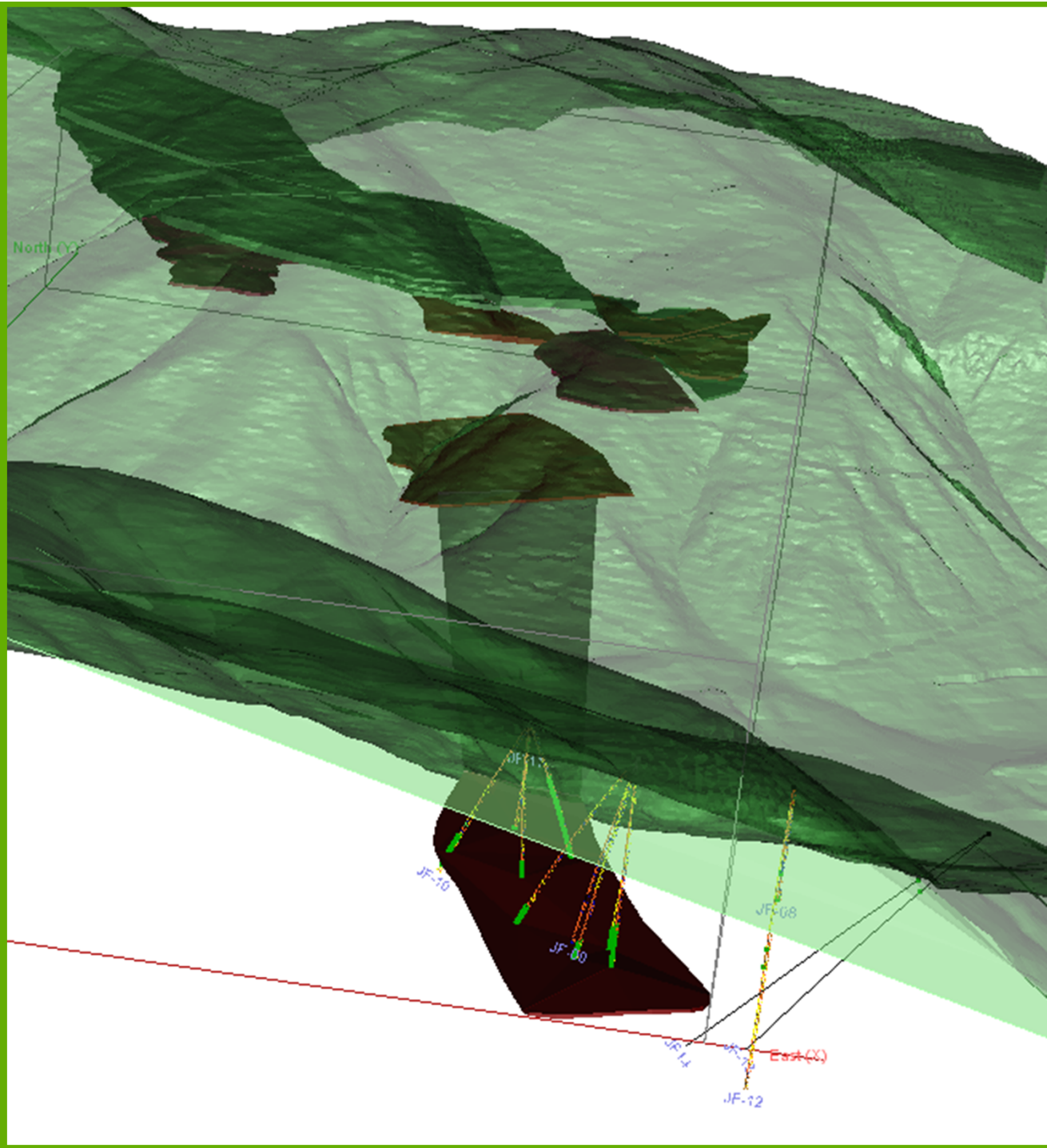
Patented & Unpatented Mining Claims

Fairway Claims

Troy Mine



JF Project



CONCLUSION

- Revett Quartzites
- East Fault – controls mineralization
- Exploration potential on trend
- Fairway Creek